

Guidelines on collection and transportation of specimens from patients with Influenza Like Illness (ILI) / Severe Acute Respiratory Infection (SARI)

Type of specimens:

1. Nasopharyngeal aspirate (NPA) #
2. Nasal & throat swab *
3. Tracheal aspirate #
4. Broncho –Alveolar Lavage (BAL) #
5. Postmortem biopsy of lung **

Note: All samples should be transported in VTM & ice (use an ice pack or vaccine container. Samples should not float on melted ice). Make sure that samples are properly secured and not leaking. DO NOT FREEZE in an event of delay in transportation, but store at + 4°C.

How to collect them:

* Nasal swab – Insert flexible fine shafted swab into nasopharynx and rotate swab. Let swab rest in place for several seconds to absorb secretions. Use one swab for both nostrils and place it into Virus Transport Medium (VTM). Fig 1

* Throat swab – Vigorously swab both tonsil areas and place in VTM. Use a tongue depressor to depress tongue so that contamination of swab with saliva is prevented. Fig 3

preferred in an ICU setting in an acutely ill patient

All samples should accompany a request form with a detail history (Available with infection control NO).

Can download from (<http://www.mri.gov.lk/en/assets/Departments/Virology/Influenza-MRI-Request-form-corrected.pdf>)

** True cut needle biopsy (through intercostals space) taken soon after death.

Two autopsy samples should be sent;

- 1st sample in VTM,
- 2nd sample in 70% alcohol

Can download from

<http://www.mri.gov.lk/en/departments/virology/sample-collection>

National Influenza Centre,
Department of Virology, MRI
011 269 3532-4 Ext 437
Fax: 011 269 1495



Fig 1



Fig 2

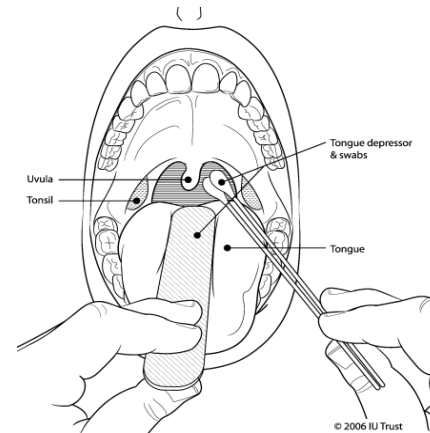


Fig 3

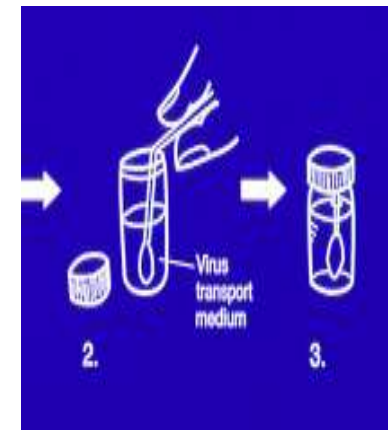


Fig 4

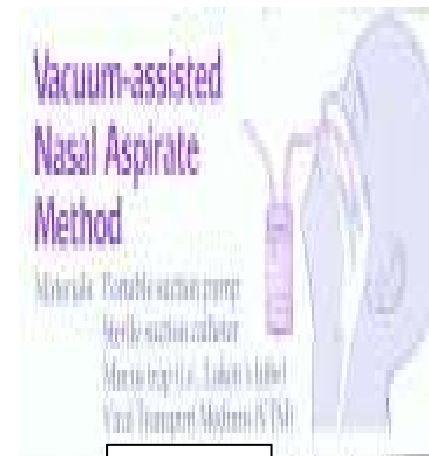


Fig 5

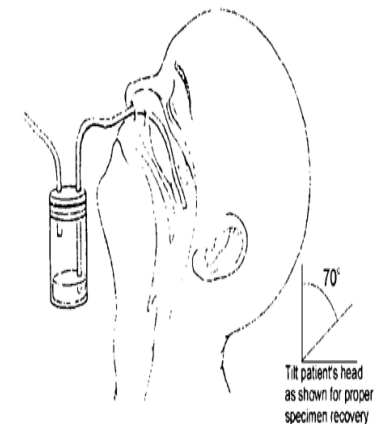


Fig 6